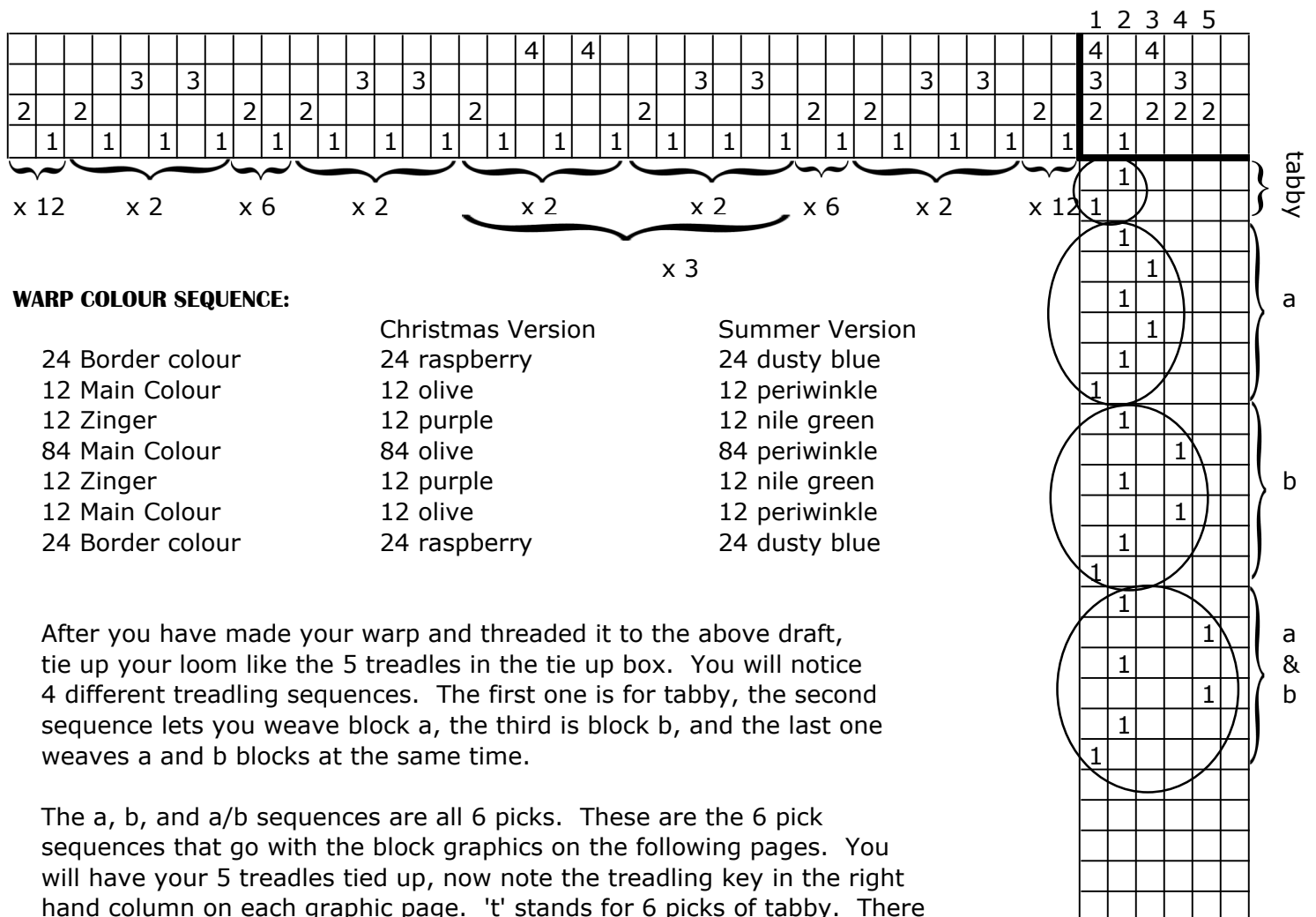




WARP: 4/8 Cotton **WEAVE STRUCTURE:** Bronson Lace
WEFT: 4/8 Cotton
REED#: 12 **SLEYING:** 1
EPI: 12
PPI: 12

NOTES: 180 warp ends.
 Width in reed: 15"
 Length of Warp: 7 yd warp will be ample for 8 placemats.
 Finished Size is approximately 12 1/2" x 16 1/2".



WARP COLOUR SEQUENCE:

	Christmas Version	Summer Version
24 Border colour	24 raspberry	24 dusty blue
12 Main Colour	12 olive	12 periwinkle
12 Zinger	12 purple	12 Nile green
84 Main Colour	84 olive	84 periwinkle
12 Zinger	12 purple	12 Nile green
12 Main Colour	12 olive	12 periwinkle
24 Border colour	24 raspberry	24 dusty blue

After you have made your warp and threaded it to the above draft, tie up your loom like the 5 treadles in the tie up box. You will notice 4 different treadling sequences. The first one is for tabby, the second sequence lets you weave block a, the third is block b, and the last one weaves a and b blocks at the same time.

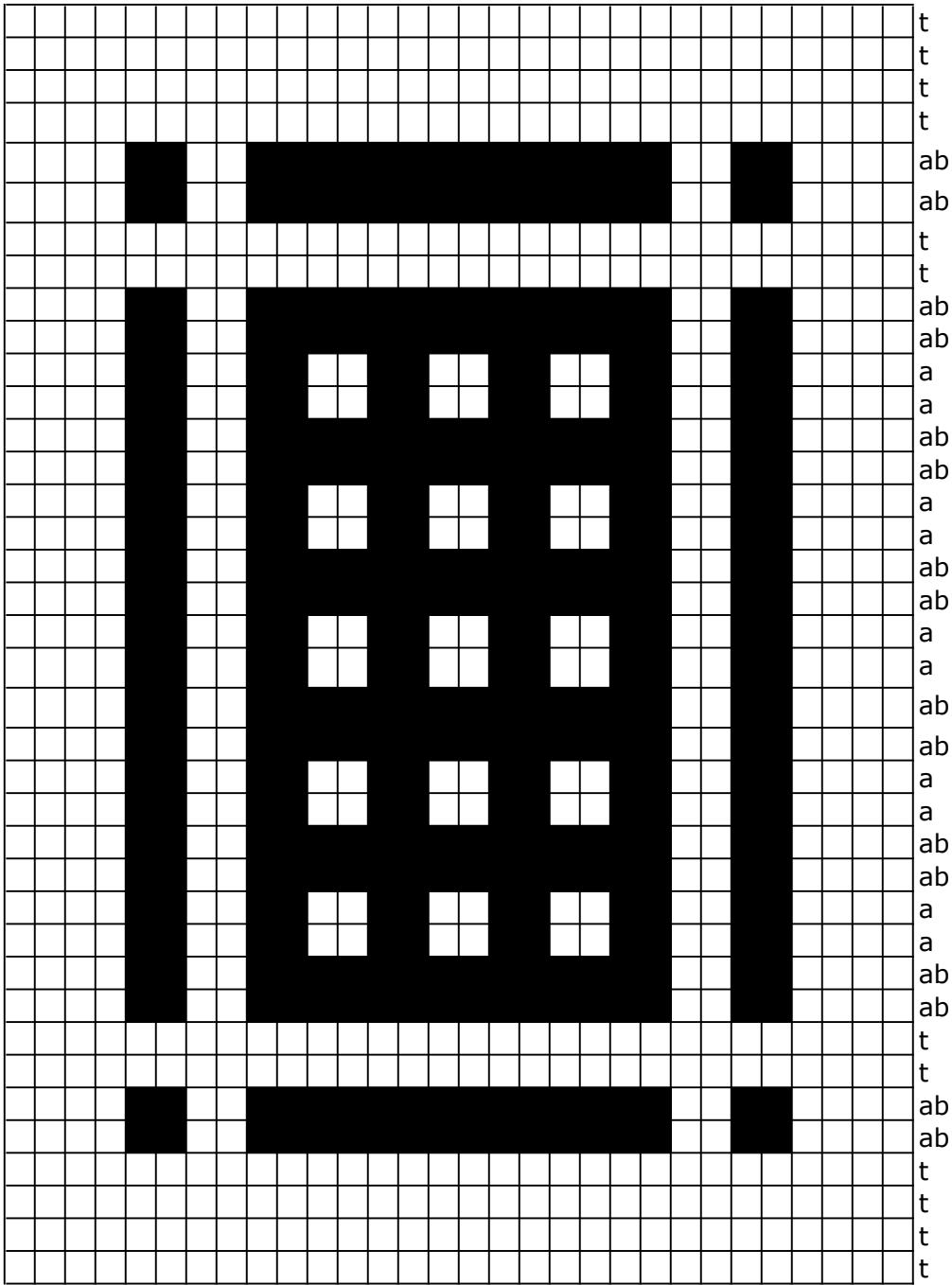
The a, b, and a/b sequences are all 6 picks. These are the 6 pick sequences that go with the block graphics on the following pages. You will have your 5 treadles tied up, now note the treadling key in the right hand column on each graphic page. 't' stands for 6 picks of tabby. There are 4 't's in a row, each 't' is worth 6 picks of tabby so you would have 24 picks of tabby. Then you have 2 'ab's which means you would have 2 6 pick sequences using the treadles tied up for 'a' and 'b'. etc. etc.

I have provided you with three graphics below. You can choose whichever one you wish. On the website the Christmas Version was woven according to Graphic #2. The Summer Version was Graphic #3. You could make each placemat different.

If you have any trouble trying to understand this, don't hesitate to get in touch with us.

You are ready to go. Throw 2 picks of plain weave to hemstitch on. Choose the graphic you are going to interpret and Go For It!

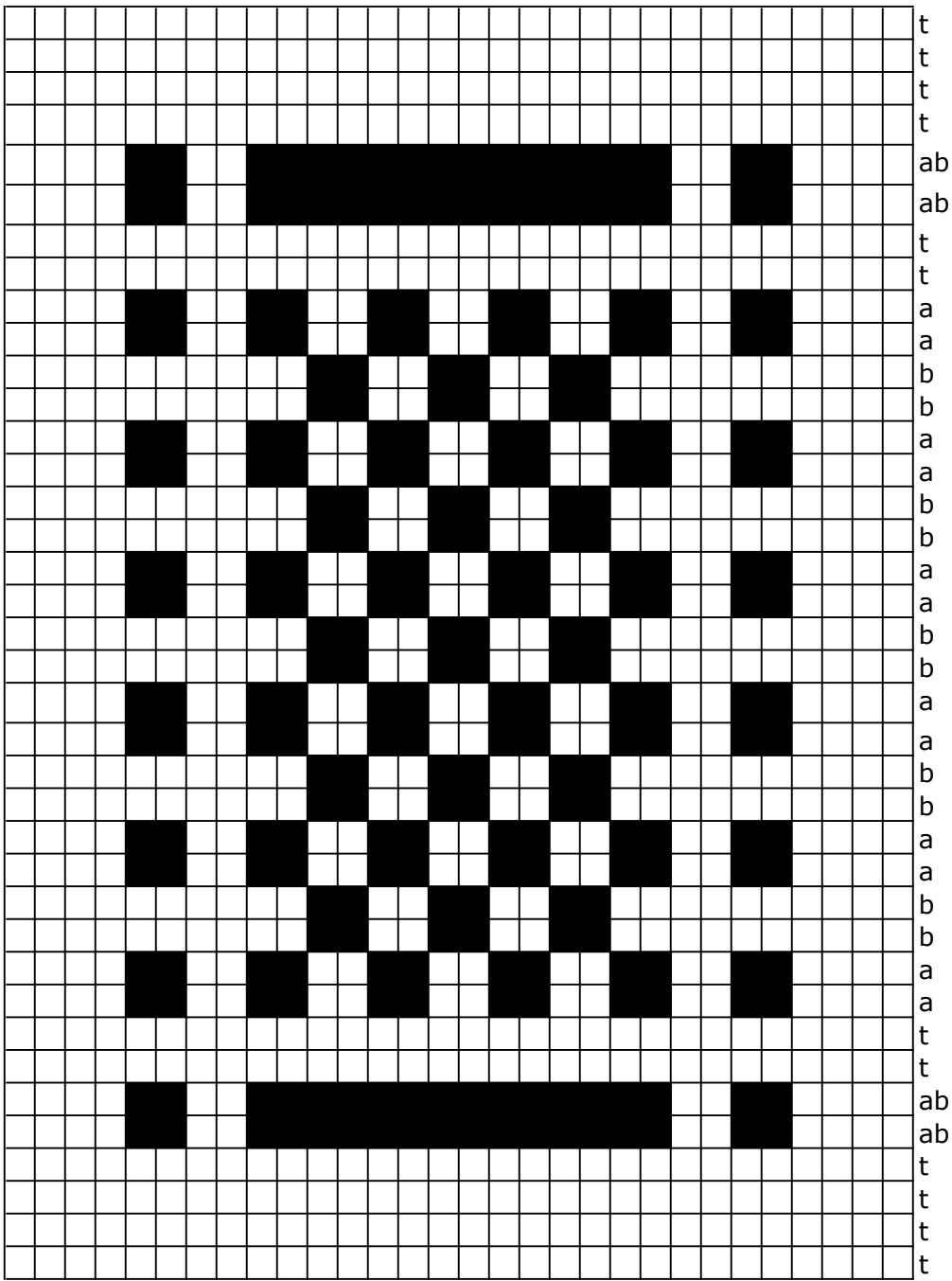
Your colour changes are tump as writ. Your first 24 picks will be the same as your outer warp colour. Your next 12 picks will be either olive or periwinkle. The next 12 will either be purple or Nile green. The main body of the placemat will either be olive or periwinkle. And you finish off your border like you started it. Hemstitch on your last 2 picks, advance the warp for your fringe and continue weaving your next placemat.



Treading

- t - 212121
- a - 232321
- b - 242421
- ab - 252521

The numbers above refer to your treadles.



Treadling

- t - 212121
- a - 232321
- b - 242421
- ab - 252521

The numbers above refer to your treadles.





